

Numbers and Letters

ToughStripe® Floor Marking Numbers and Letters

- Easy to view 6 in. x 8 in. numbers and letters are ideal for marking aisle-ways, shipping and receiving docks, distribution centers or other areas in your facility
- Material removes cleanly without any unsightly adhesive residue or damage to the floor



	Black 20/pk.	White 20/pk.	Red 20/pk.	Green 20/pk.	Blue 20/pk.	Yellow 20/pk.
0	121847	121848	121849	121850	121851	121852
1	121853	121854	121855	121856	121857	121858
2	121859	121860	121861	121862	121863	121864
3	121865	121866	121867	121868	121869	121870
4	121871	121872	121873	121874	121875	121876
5	121877	121878	121879	121880	121881	121882
6	121883	121884	121885	121886	121887	121888
7	121889	121890	121891	121892	121893	121894
8	121895	121896	121897	121898	121899	121900
9	121901	121902	121903	121904	121905	121906
A	121691	121692	121693	121694	121695	121696
B	121697	121698	121699	121700	121701	121702
C	121703	121704	121705	121706	121707	121708
D	121709	121710	121711	121712	121713	121714
E	121715	121716	121717	121718	121719	121720
F	121721	121722	121723	121724	121725	121726
G	121727	121728	121729	121730	121731	121732
H	121733	121734	121735	121736	121737	121738
I	121739	121740	121741	121742	121743	121744
J	121745	121746	121747	121748	121749	121750

	Black 20/pk.	White 20/pk.	Red 20/pk.	Green 20/pk.	Blue 20/pk.	Yellow 20/pk.
K	121751	121752	121753	121754	121755	121756
L	121757	121758	121759	121760	121761	121762
M	121763	121764	121765	121766	121767	121768
N	121769	121770	121771	121772	121773	121774
O	121775	121776	121777	121778	121779	121780
P	121781	121782	121783	121784	121785	121786
Q	121787	121788	121789	121790	121791	121792
R	121793	121794	121795	121796	121797	121798
S	121799	121800	121801	121802	121803	121804
T	121805	121806	121807	121808	121809	121810
U	121811	121812	121813	121814	121815	121816
V	121817	121818	121819	121820	121821	121822
W	121823	121824	121825	121826	121827	121828
X	121829	121830	121831	121832	121833	121834
Y	121835	121836	121837	121838	121839	121840
Z	121841	121842	121843	121844	121845	121846
Punct. Set*	121907	121908	121909	121910	121911	121912

* Each set includes: 40 periods, 20 commas, 20 question marks, 20 exclamation points, 20 forward slashes, 20 dashes and 20 ampersands.

Number and Letter Labels

15 Series Outdoor Numbers and Letters

- B-946 premium outdoor grade vinyl with permanent pressure sensitive adhesive
- Designed for permanent applications in severe outdoor environments as well as indoors
- Special acrylic adhesive adheres strongly, making marker removal difficult



15 Series Individual Cards

- Sold as individual cards

Catalog #	Character Height	Marker Size	Markers Per Card
Available in letters (A-Z), dashes (DSH) only			
1500-*	0.25 in.	0.375 in. x 0.25 in.	144
Available in numbers (0-9), letters (A-Z), dashes (DSH) and arrows (ARO).			
1520-*	0.625 in.	0.75 in. x 0.562 in.	32
1530-*	1 in.	1.5 in. x 0.875 in.	10
1534-*	2 in.	2.25 in. x 0.875 in.	10
1550-*	3 in.	3.5 in. x 1.5 in.	6
Available in numbers (0-9), letters (A-Z), dashes (DSH)			
1560-*	3.875 in.	5 in. x 1.75 in.	5
1570-*	6 in.	9 in. x 5 in.	1

To order: replace the asterisk (*) with the desired character listed above.

15 Series Combo Packs

- Standard package: 25 assorted cards

Catalog #	Character Height	Marker Size	Markers Per Card
Letter Combo Packs			
1500-LTR KIT	0.25 in.	0.375 in. x 0.25 in.	144
1520-LTR KIT	0.625 in.	0.75 in. x 0.562 in.	32
1530-LTR KIT	1 in.	1.5 in. x 0.875 in.	10
1534-LTR KIT	2 in.	2.25 in. x 0.875 in.	10
1550-LTR KIT	3 in.	3.5 in. x 1.5 in.	6
1560-LTR KIT	3.875 in.	5 in. x 1.75 in.	5
1570-LTR KIT	6 in.	9 in. x 5 in.	1
Number Combo Packs			
1500-# KIT	0.25 in.	0.375 in. x 0.25 in.	144
1520-# KIT	0.625 in.	0.75 in. x 0.562 in.	32
1530-# KIT	1 in.	1.5 in. x 0.875 in.	10
1534-# KIT	2 in.	2.25 in. x 0.875 in.	10
1550-# KIT	3 in.	3.5 in. x 1.5 in.	6
1560-# KIT	3.875 in.	5 in. x 1.75 in.	5
1570-# KIT	6 in.	9 in. x 5 in.	1





34 Series Indoor Numbers and Letters

- B-498 plastic coated cloth numbers and letters with pressure sensitive adhesive
- The adhesive and cloth backing offers excellent holding power, yet allows for clean removal and repositioning if necessary



34 Series Individual Cards

- A single number, letter or character
- Sold as individual cards



34 Series Combo Packs

- Combo of all numbers or all letters
- Standard package: 25 assorted cards



34 Series Consecutive Markers

- Contains sequence on one card (larger sized cards split the alphabet)
- Sold as individual cards

Catalog #	Character Height	Marker Size	Markers Per Card
Available in numbers (0-9), letters (A-Z), dashes (DSH)			
3400-*	0.25 in.	0.375 in. x 0.25 in.	144
3410-*	0.375 in.	0.5 in. x 1.031 in.	78
Available in numbers (0-9), letters (A-Z), dashes (DSH) and arrows (ARO).			
3420-*	0.625 in.	0.75 in. x 0.562 in.	32
3430-*	1 in.	1.5 in. x 0.875 in.	10
3440-*	1.937 in.	2.25 in. x 0.875 in.	10
3450-*	2.937 in.	3.5 in. x 1.5 in.	6
Available in numbers (0-9), letters (A-Z), dashes (DSH) and blanks (BLANK).			
3460-*	3.875 in.	5 in. x 1.75 in.	5
3470-*	6 in.	9 in. x 5 in.	1

To order: replace the asterisk (*) with the desired characters listed above.

Catalog #	Character Height	Marker Size	Markers Per Card
Letter Combo Packs (A-Z)			
3400-LTR KIT	0.25 in.	0.375 in. x 0.25 in.	144
3410-LTR KIT	0.375 in.	0.5 in. x 1.031 in.	78
3420-LTR KIT	0.625 in.	0.75 in. x 0.562 in.	32
3430-LTR KIT	1 in.	1.5 in. x 0.875 in.	10
3440-LTR KIT	1.937 in.	2.25 in. x 0.875 in.	10
3450-LTR KIT	2.937 in.	3.5 in. x 1.5 in.	6
3460-LTR KIT	3.875 in.	5 in. x 1.75 in.	5
3470-LTR KIT	6 in.	9 in. x 5 in.	1
Number Combo Packs (0-9)			
3400-# KIT	0.25 in.	0.375 in. x 0.25 in.	144
3410-# KIT	0.375 in.	0.5 in. x 1.031 in.	78
3420-# KIT	0.625 in.	0.75 in. x 0.562 in.	32
3430-# KIT	1 in.	1.5 in. x 0.875 in.	10
3440-# KIT	1.937 in.	2.25 in. x 0.875 in.	10
3450-# KIT	2.937 in.	3.5 in. x 1.5 in.	6
3460-# KIT	3.875 in.	5 in. x 1.75 in.	5
3470-# KIT	6 in.	9 in. x 5 in.	1

Catalog #	Legend	Char. Height	Marker Size	Markers Per Card
34010	(0-9)	0.25 in.	0.375 x 0.25 in.	144
34110	(0-9)	0.375 in.	0.5 x 1.031 in.	78
34138	(A-Z)	0.375 in.	0.5 x 1.031 in.	78
34210	(0-9)	0.625 in.	0.75 x 0.562 in.	32
34238	(A-Z)	0.625 in.	0.75 x 0.562 in.	32
34310	(0-9)	1 in.	1.5 x 0.875 in.	10
34340	(A-J)	1 in.	1.5 x 0.875 in.	10
34341	(K-T)	1 in.	1.5 x 0.875 in.	10
34342	(U-Z)	1 in.	1.5 x 0.875 in.	10
34410	(0-9)	1.937 in.	2.25 x 0.875 in.	10
34440	(A-J)	1.937 in.	2.25 x 0.875 in.	10
34441	(K-T)	1.937 in.	2.25 x 0.875 in.	10
34442	(U-Z)	1.937 in.	2.25 x 0.875 in.	10



97 Series Indoor / Outdoor Numbers and Letters

- B-946 markers with superior abrasion, chemical and UV resistance
- Designed for permanent applications in indoor and outdoor environments



97 Series Individual Cards

- Sold as individual cards

Catalog #	Card Size	Character Height	Markers Per Card
9712-*	0.75 in. x 2 in.	0.625 in.	20
9713-*	1.5 in. x 1 in.	1 in.	10
9714-*	2.25 in. x 1.8 in.	1.937 in.	5

To order: replace the asterisk (*) with the desired number (0-9), capital letter (A-Z) or dash (DSH).

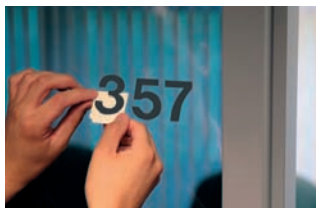
97 Series Combo Packs

- Standard package: 25 assorted cards

Catalog #	Char. Height	Marker Size	Markers Per Card
Letter Combo Packs			
9712-LTR KIT	0.625 in.	0.75 in. x 2.031 in.	20
9713-LTR KIT	1 in.	1.5 in. x 1.187 in.	10
9714-LTR KIT	2 in.	2.25 in. x 1.187 in.	5
Number Combo Packs			
9712-# KIT	0.625 in.	0.75 in. x 2.031 in.	20
9713-# KIT	1 in.	1.5 in. x 1.187 in.	10
9714-# KIT	2 in.	2.25 in. x 1.187 in.	5



Numbers and Letters



Helvetica Quik-Align® Kits and 10-Packs

- B-933 vinyl with permanent adhesive
- Self-spacing and self-aligning die-cuts

Helvetica Quik-Align Kits:

10 identical characters or arrows; 5 identical \$ or &; Punctuation includes 5 periods and 5 commas

Size	Black Lowercase	White Lowercase	Black Uppercase
1 in. kit	-	-	-
2 in. kit	80012	80032	-
3 in. kit	80013	80033	-
4 in. kit	80014	80034	-
6 in. kit	80016	80036	-

10-Pack Refills:

10 identical characters or arrows; 5 identical \$ or &; Punctuation includes 5 periods and 5 commas

Size	Black Lowercase	White Lowercase	Black Uppercase
1 in.	8235-*	8305-*	8200-* Available in (0-9), (&), (\$) only
1.5 in.	8240-*	-	8205-* Available in (0-9), (&), (\$) only
2 in.	8245-*	-	-
3 in.	8250-*	8320-*	8215-*
4 in.	8255-*	8325-*	8220-* Available in (0-9), (&), (\$) only
6 in.	8265-*	8335-*	-

Letter sizes refer to uppercase letters, lowercase are proportional.
To order: replace the asterisk (*) with the desired number (0-9), capital letter (A-Z), (&), (\$) or punctuation (PUN).*



Gothic Quik-Align® Kits and 10-Packs

- B-933 vinyl with permanent adhesive
- Self-spacing and self-aligning die-cuts

Gothic Quik-Align Kits:

Includes 20 each of A, E, I, L, N, O, R, S, T, and 0-9; 10 each of remaining letters; 5 each of \$ and & punctuation

Size	Black	Black Condensed	White	Yellow	Red
1 in. kit	52203	52180	52204	-	-
2 in. kit	52207	52184	52208	52210	-
3 in. kit	52211	52188	52212	52214	-
4 in. kit	52215	-	52216	-	52213
6 in. kit	52219	-	52220	-	52217

10-Pack Refills:

Includes 10 identical characters or arrows; 5 identical \$ or &; Punctuation includes 5 periods and 5 commas

Size	Black	Black Condensed*	White	Yellow	Red
1 in.	5010-*	-	5040-*	-	-
2 in.	5050-*	6450-*	5080-*	5060-*	-
3 in.	5100-*	6500-*	5130-*	5110-*	5120-*
4 in.	5140-*	-	5170-*	5150-*	5160-*
6 in.	5180-*	-	5210-*	-	-

To order: replace the asterisk (*) with the desired number (0-9), capital letter (A-Z), arrow (ARO), (&), (\$) or punctuation (PUN).
* Arrows not available in Condensed Black

Number and Letter Labels



3-Series Glow-in-the-Dark Ultra Reflective Numbers and Letters

- 7 times more reflective than other reflective materials
- Black characters w/ glow-in-the-dark border on a highly-reflective silver background
- Designed for permanent application in indoor or outdoor environments

Catalog #	Marker Size	Character Size	Qty
3000-*	2.875 in. x 1.5 in.	2 in.	10
3010-*	3.5 in. x 2.5 in.	3 in.	10
3020-*	6 in. x 3 in.	5 in.	10

To order: replace the asterisk (*) with the desired number (0-9), capital letter (A-Z), dash (DSH), blank (BLANK), ampersand (&) or period (PRD).



BradyGlo™ Gothic Quik-Align Numbers and Letters

- Photoluminescent material charges in 5 minutes at 1000 Lux for 10+ hours of glow time
- Consistent glow life and unlimited rechargability
- Complies with ASTM 2030-99

Catalog #	Character Size	Qty
6001-*	1 in.	25
6002-*	2 in.	25
6003-*	3 in.	25
6004-*	4 in.	25

To order: replace the asterisk (*) with the desired number (0-9) or capital letter (A-Z).



Die-cut Magnetic Numbers

- Magnetic numbers are perfect for safety scoreboards

Catalog #	Size	Qty.
57624	1.5 in.	15 each of 0-3; 8 each of 4-9



Aluminum Utility Panels

- 20 mil. aluminum panels are designed to be rugged, yet conform to pole
- Recommended use with B-946 vinyl or B-997 reflective markers
- 7.25 in. panel holds eight markers
- 12 in. panel holds eleven reflective markers or twelve vinyl markers

Catalog #	Panel Size	Qty.
97198	1.75 in. x 7.25 in.	25
97199	1.75 in. x 12 in.	25



Pre-printed KVA Markers

- Help determine the KVA classification of pole-mounted transformers
- Yellow numbers printed on B-997 BradyLite Reflective Sheeting
- Come with slit liner for easy application
- Standard Package: 25 cards

Catalog #	Legend	Marker Size	Markers Per Card
50010	7 1/2	2.875 in. x 3.25 in.	1
50011	10	2.875 in. x 3.25 in.	1
50012	15	2.875 in. x 3.25 in.	1
50013	25	2.875 in. x 3.25 in.	1
50015	50	2.875 in. x 3.25 in.	1
50016	75	2.875 in. x 3.25 in.	1
50014	37 1/2	2.875 in. x 3.25 in.	1
50017	100	2.875 in. x 3.25 in.	1
50018	150	2.875 in. x 3.25 in.	1
50019	167	2.875 in. x 3.25 in.	1
50020	500	2.875 in. x 3.25 in.	1



Outdoor Numbers and Letters (B-946)

- B-946 tough vinyl film provides high visibility and lasting performance
- UV resistant protects against fading and shrugs off oil and water
- Meets APWA color code: black on orange for communications yellow on black for electric, oil and gas
- Standard package: 1 card

Catalog #	Char. Height	Marker Size	Color	Markers Per Card
6560-*	1 in.	1.5 x 0.875 in.	Blk / Org	10
6570-*	2 in.	2.25 x 0.875 in.	Blk / Org	10
7890-*	1 in.	1.5 x 0.875 in.	Ylw / Blk	10
7897-*	2 in.	2.25 x 0.875 in.	Ylw / Blk	10

To order: replace the asterisk (*) with the desired number (0-9), capital letter (A-Z) or dash (DSH).



Seriesystem™ Kit Serialized Markers

- B-498 repositionable vinyl cloth with black character on yellow background
- 10 single digit cards (0-9) included in each kit for replacing numbers
- Standard Package:
 - Legend 01-99 is 6/card, 27 cards/package
 - Legend 001-999 is 12/card, 94 cards/package

Catalog #	Legends	Char. Height	Marker Size	Markers Per Card
34353	01-99	1 in.	1.5 x 1.5 in.	6
34253	001-999	0.625 in.	0.75 x 1.5 in.	12



BradyLite® Reflective Numbers and Letters (B-997)

- Reflects light 100 times brighter than a plain white surface
- Will perform in tough environmental conditions
- Can be applied in temps as low as 10° F
- Standard package: 25 cards

Catalog #	Char. Height	Marker Size	Color	Markers Per Card
5900-*	1 in.	1.5 x 1 in.	Blk / Slvr	1
5905-*	1 in.	1.5 x 1 in.	Ylw / Blk	1
5920-*	1 in.	1.5 x 1 in.	Blk / Ylw	1
5890-*	1.5 in.	1.875 x 1.375 in.	Ylw / Blk	1
5000-*	2.5 in.	2.875 x 1.75 in.	Ylw / Blk	1
Only available in numbers (0-9) and blank (BLANK)				
5910-*	1 in.	1.5 x 1 in.	Blk / Org	1

To order: replace the asterisk (*) with the desired number (0-9), capital letter (A-Z), dash (DSH) or blank (BLANK)



Aluminum Embossed Numbers and Letters

- Roman style numbers and letters contain pre-punched holes for easy installation; 1 in. nails included
- Standard Package: 10

Catalog #	Character Height	Qty.
1600-*	3 in.	10

To order: replace the asterisk (*) with the desired number (0-9), capital letter (A-Z).